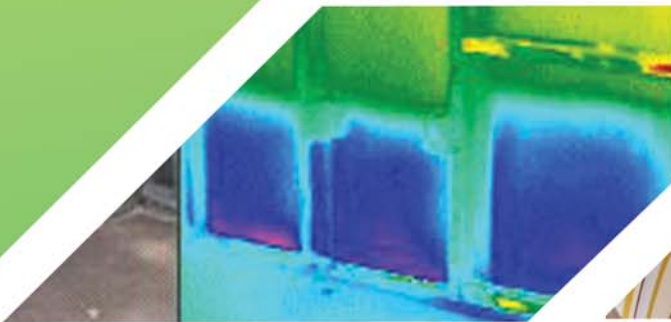




# GOBBELL HAYS PARTNERS, INC.



architects • engineers • environmental consultants  
program/project management at risk



Gobbell Hays Partners, Inc. (GHP), founded in 1977, is an architectural, engineering, and environmental consulting firm operating from offices in Nashville, Tennessee; Denver, Colorado; San Antonio, Texas; and Palm Beach Gardens, Florida. GHP has built a firm that successfully and synergistically integrates the skills of architects, engineers, industrial hygienists, and safety professionals. Our consulting and management services focus on achieving a healthy, safe, and pleasing environment where people live and work.

*"Our goal is to do an excellent job with the basics – quality, value, service, and ethics."*

*Ronald V. Gobbell, FAIA, President*

*"Ours is a service business. Service businesses are all about people, the knowledge and experience they possess, and the interpersonal skills with which the knowledge and experience are brought to bear on clients' projects. GHP is exceptional because we have good people who hold themselves to very, very high performance expectations. We make every effort to deliver and apply our knowledge and experience in the most effective way for every client."*

*Steve M. Hays, PE, CIH, Chairman*

*quality  
value  
service  
ethics*



## ARCHITECTURAL STUDIO

- Architectural services for a variety of public and private clients nationwide.
- New construction and renovation design.
- GHP's architects and environmental professionals specialize in the delivery of healthcare, hospitality and laboratory projects.

## ARCHITECTURAL SERVICES

- General Architectural Services
- Historic Preservation
- Laboratory Programming & Design
- Facility Assessments
- Feasibility and Master Plan Studies
- Space Planning and Interior Design
- Environmental Architecture

## FORENSIC ARCHITECTURE

- Architectural and environmental professionals perform forensic architectural services to analyze building defects and their associated symptoms of failure.
- GHP has performed assessments on and evaluated millions of square feet of buildings throughout the country.
- Assessments include every building component and type.
- Facilities range from hospitality to healthcare and from schools to laboratories and other high tech facilities.
- Root causes of the defects are determined, associated problems surveyed, and recommendations for corrective action are tabulated and budgeted.
- Delivery of necessary repairs and upgrades through the Turn/KEY and PM@Risk approaches.
- Operation and Maintenance programs are written and delivered to building users.

## ENVIRONMENTAL, HEALTH AND SAFETY STUDIO

- Authorities in the fields of asbestos, indoor air quality (IAQ), lead-based paint (LBP), mold, and infection control.
- GHP specializes in conducting assessments, remediation designs, and project management for environmental issues.
- For the healthcare industry, GHP provides consultation and program development for infection control.

## ENVIRONMENTAL SERVICES

- Asbestos
- Mold
- Indoor Air Quality
- Building Forensics
- Thermal Imaging
- Infection Control Risk Assessments
- Preventative Maintenance Programming
- Environmental Site Assessments
- Industrial Hygiene
- Training

## LEED AND ENERGY

- LEED Consulting
- LEED Design and Engineering
- LEED Facilitation
- LEED Experience – New
- Construction, Core & Shell, and Commercial Interiors
- IEQ Air Testing Protocols for LEED Point Confirmation
- Energy Analysis
- Energy Star Programs
- Energy Savings Concepts

## GENERAL

### BUILDING TYPES

- Healthcare
- Hospitality
- Commercial
- Laboratories
- Educational
- Institutional
- Government
- Multi-Family Housing
- Senior Living

### PUBLICATIONS

- GHP professionals have been nationally published in hundreds of articles, books, and technical documents.
- GHP is active in lecturing and training on built environmental issues.
- GHP authored a book entitled *Indoor Air Quality: Solutions and Strategies*, a resource based on the interdisciplinary approach to IAQ control.
- GHP co-authored a book entitled *Settled Asbestos Dust Sampling and Analysis*, a resource based on compiling the most significant data on asbestos in settled dust.

### PROGRAM/PROJECT MANAGEMENT AT RISK

- Turn/KEY - Single Source of Responsibility
- Reduce Overhead and Capitalize PM Costs
- Quick Efficient Delivery (Nationwide)
- Customized Program for Each Client
- Managed from an Owner's Perspective
- Guaranteed Cost/Schedule

*"Gobbell Hays Partners has a unique blend of personalities, from environmental to architectural to engineering. This exceptional talent pool, starting with Ron Gobbell and Steve Hays, allows us to offer an amazing range of services to better respond to our clients' needs."*

*Connie Richardson, Partner, VP, CFO*



[www.ghp1.com](http://www.ghp1.com)

**Nashville, Tennessee**  
615-254-8500

**Denver, Colorado**  
303-574-0082

**San Antonio, Texas**  
210-824-5600

**Palm Beach Gardens, Florida**  
561-718-4626